

# IMAXX CANADIAN BOND FUND CLASS A

**Inception Date**  
June 3, 2002

**Currency**  
CAD

## FUND ESSENTIALS

<b>NAVPS</b>	\$10.64
<b>MER</b>	1.13%
<b>Distribution Yield</b>	12.95%
<b>Classification</b>	Mutual Funds
<b>Assets (\$mil)</b>	28.31
<b>RRSP Eligible</b>	Yes
<b>Fundserv Code</b>	AFM101 (DSC) AFM201 (ISC) AFM501 (LSC)

## TOP TEN HOLDINGS (%)

1.	Canada Govt 2.000 01-Dec-2051	9.8
2.	Quebec Prov 3.500 01-Dec-2048	3.5
3.	Co-Operators Fin S 3.327 13-May-2030	2.9
4.	Chip Mortgage Trust 1.738 15-Dec-2025	2.8
5.	Realt 2015-1 D 3.658 12-May-2050	2.6
6.	Federation Des Caiss 1.992 28-May-2026	2.5
7.	Fastr 2020-A A2 2.700 15-Apr-2029	2.2
8.	Realt 2016-2 B 3.577 12-Sep-2051	2.2
9.	Athene Gblal Fundng 2.470 09-Jun-2028	2.0
10.	Aimco Reality Inv 2.712 01-Jun-2029	1.9
	<b>Total</b>	<b>32.4</b>

## STRATEGY DESCRIPTION

The imaxx Canadian Bond Fund seeks to deliver long-term stable growth through interest income and capital growth by investing primarily in Canadian bonds of varying maturities and in short-term securities.

When building the fixed income portfolio, the Portfolio manager: follows a fundamental, bottom-up approach to investing; maintains a value bias towards the purchase of fixed income securities; and focuses on credit quality, duration (term to maturity) and liquidity.

## ASSET ALLOCATION (%)

Asset Class	Weight
Corporate Bonds	73.3
Government Bonds	17.5
Mortgage	6.7
Cash and Short Term	2.6

## SECTOR ALLOCATION (%)

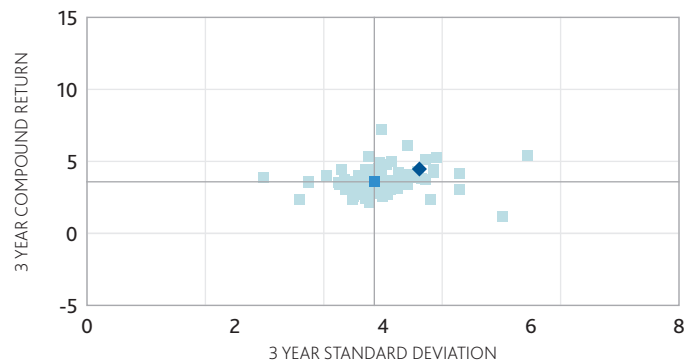
Sector	Weight
Fixed Income	97.4
Cash and Short Term	2.6

## GEOGRAPHIC ALLOCATION (%)

Region	Weight
Canada	96.2
United States	3.8

# IMAXX CANADIAN BOND FUND CLASS A

## 3YR COMPOUND RETURN



- ◆ imaxx Canadian Bond Fund Class A
- Other - Canadian Fixed Income
- Median

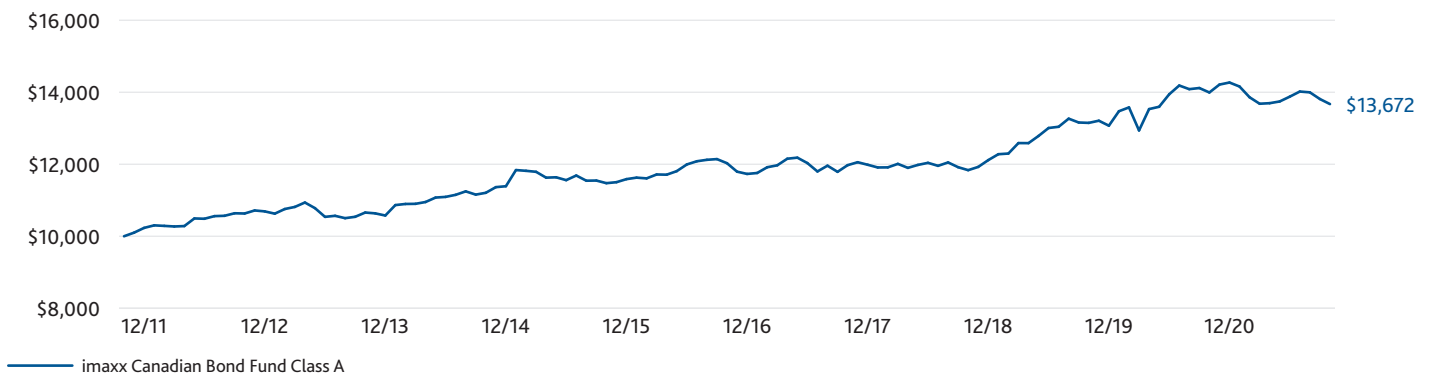
Source: Financial Information provided by Fundata Canada Inc. © Fundata Canada Inc. All Rights Reserved.

## RISK/RETURN ANALYSIS

Risk	1 Year	3 Years	5 Years	10 Years
Beta	0.93	1.13	1.10	1.03
Alpha	0.01	0.00	0.00	0.00
Sharpe	-0.66	0.71	0.34	0.54
Treynor	-0.03	0.03	0.02	0.02
R-squared	0.97	0.90	0.91	0.92

## GROWTH OF \$10,000

10-Year period – From November 1, 2011 to October 31, 2021



## PERFORMANCE (%)

CUMULATIVE PERFORMANCE	ANNUALIZED PERFORMANCE								
	1 Month	3 Months	6 Months	YTD	1 Year	3 Years	5 Years	10 Years	SI
Fund	-1.01	-2.48	-0.18	-4.20	-2.30	4.66	2.44	3.10	4.27
Quartile Rank	3	3	3	2	2	2	2	2	1
Category Avg	-0.77	-2.18	-0.17	-4.20	-2.12	4.10	2.13	2.63	2.67

CALENDAR YEAR PERFORMANCE	2020	2019	2018	2017	2016	2015	2014	2013	2012	2011
Fund	9.18	7.07	1.08	2.17	1.25	1.73	7.69	-1.08	4.48	8.92
Quartile Rank	2	2	1	2	3	3	2	2	2	1
Category Avg	8.60	6.88	-0.25	2.58	2.22	0.47	6.38	-1.64	3.94	7.62

Returns are presented net of management fees

YTD = Year to Date; SI = Since Inception

Source: Financial Information provided by Fundata Canada Inc. © Fundata Canada Inc. All Rights Reserved.

## PROSPECTUS RISK

LOW

LOW TO MEDIUM

MEDIUM

MEDIUM TO HIGH

HIGH

# IMAXX CANADIAN BOND FUND CLASS A

## TOP TWENTY-FIVE HOLDINGS (%)

1. Canada Govt 2.000 01-Dec-2051	9.8
2. Quebec Prov 3.500 01-Dec-2048	3.5
3. Co-Operators Fin S 3.327 13-May-2030	2.9
4. Chip Mortgage Trust 1.738 15-Dec-2025	2.8
5. Realt 2015-1 D 3.658 12-May-2050	2.6
6. Federation Des Caiss 1.992 28-May-2026	2.5
7. Fastr 2020-A A2 2.700 15-Apr-2029	2.2
8. Realt 2016-2 B 3.577 12-Sep-2051	2.2
9. Athene Gblal Fundng 2.470 09-Jun-2028	2.0
10. Aimco Reality Inv 2.712 01-Jun-2029	1.9
11. Mcap Commercial LP 3.743 25-Aug-2025	1.9
12. National Australia B 3.515 12-Jun-2025	1.8
13. Wth Car Rental Ulc 2.781 20-Jul-2024	1.8
14. Cdn Credit Crd Trust 3.553 24-May-2023	1.8
15. Pembina Pipeline 3.310 01-Feb-2030	1.8
16. Eagle Credit Card Tr 3.450 17-Jul-2024	1.6
17. Enbridge Gas Dis Inc 3.650 01-Apr-2050	1.6
18. Fortified Trust 2.464 23-Oct-2026	1.6
19. Hydro One Inc 3.100 15-Sep-2051	1.5
20. Sienna Senior Living 3.450 27-Feb-2026	1.5
21. Cards li Trust 3.127 15-Nov-2024	1.5
22. Royal Bank of Canada 4.500 24-Nov-2025	1.4
23. Cdn Credit Crd Trust 2.303 24-May-2023	1.4
24. Shaw Communications 6.750 09-Nov-2039	1.4
25. Hyundai Cap Canada 2.008 12-May-2026	1.4
<b>Total</b>	<b>56.4</b>

### Fiera Capital Corporation

1981 McGill College Avenue, Suite 1500  
Montreal, Quebec H3A 0H5

For further information, please visit: [imaxxwealth.com](http://imaxxwealth.com)

The imaxxFunds are mutual funds offered pursuant to a prospectus. The information contained herein is an overview only and is qualified by the more detailed information contained in the prospectus. The prospectus contains important information about the fund, including its investment objective and strategies, investment risks, purchase options, applicable management fees, performance fees, other charges and expenses. Please read the prospectus carefully before investing. The amount of risk associated with any particular investment depends largely on your own personal circumstances including your time horizon, liquidity needs, portfolio size, income, investment knowledge and attitude toward price fluctuations. Investors should consult their financial advisor before making a decision as to whether this fund is a suitable investment for them. This communication should not be considered a solicitation to buy or an offer to sell securities of the fund. Commissions, trailing commissions, management fees and expenses all may be associated with mutual fund investments. The indicated rates of return are the historical annual compounded total returns including changes in unit value and reinvestment of all distributions and do not take into account sales, redemption, distribution or optional charges or income taxes payable by any securityholder that would have reduced returns. Mutual funds are not guaranteed, their values change frequently and past performance may not be repeated. The rate of return is used only to illustrate the effects of the compound growth rate and is not intended to reflect future values of the mutual fund or returns on investment in the mutual fund.

™imaxx, imaxxFunds and imaxxWealth are trademarks of Fiera Capital Corporation.