

Semi-Annual Management Report of Fund Performance

FOR THE PERIOD ENDED JUNE 30, 2021

imaxx Canadian Fixed Pay Fund



FIERACAPITAL

This management report of fund performance contains financial highlights but does not contain either interim or annual financial statements of the Fund. You can get a copy of the financial statements at your request, and at no cost, by calling 1-800-361-3499, by writing to us at Fiera Capital Corporation, 1981 McGill College Avenue, suite 1500, Montreal, QC, H3A 0H5 Attention: Fiera Capital Mutual Funds – Investor Solutions or by visiting our website at www.fiera.com or SEDAR at www.sedar.com.

Securityholders may also contact us using one of these methods to request a copy of the investment fund's proxy voting policies and procedures, proxy voting disclosure record, or quarterly portfolio disclosure.

IMAXX CANADIAN FIXED PAY FUND SEMI-ANNUAL MANAGEMENT REPORT OF FUND PERFORMANCE For the period ended June 30, 2021

MANAGEMENT DISCUSSION OF FUND PERFORMANCE

Fiera Capital Corporation is the Manager (“Fiera” or the “Manager”) of the imaxx Canadian Fixed Pay Fund (the “Fund”). RBC Investor Services Trust is the Trustee and Custodian (the “Trustee” or the “Custodian”) of the Fund.

Investment Objective and Strategies

The Fund’s investment objective is to provide a consistent stream of monthly income and some capital appreciation by investing in a portfolio of Canadian fixed income, investment trust units and equity investments.

The Fund’s portfolio is deeply diversified. In addition to holding traditional equity-related and investment grade fixed income securities, the portfolio may include trusts, covered options, convertible debentures, high yield bonds, preferred shares, ETFs and other similar securities in order to enhance returns and/or mitigate risk. The Fund’s asset mix generally includes 60%–90% equities and 10%–40% fixed income securities, including cash and cash equivalents. The portfolio manager may invest up to 30% of the portfolio in foreign securities. If the Fund invests in bank-sponsored asset-backed commercial paper (ABCP), such investments will not exceed 5% of the Fund, in aggregate.

Risk

No material changes were made which affected the overall level of risk associated with an investment in the Fund for the period ended June 30, 2021. The overall level of risk associated with an investment in the Fund remains as discussed in the latest prospectus.

Results of Operations

Net Asset Value

The Net Asset Value (“NAV”) of the Fund was \$233.2 million as of June 30, 2021, an increase of \$5.6 million from \$227.6 million as of December 31, 2020. The increase in the NAV is mainly explained by the Fund’s positive performance of \$18.8 million, partly offset by the net redemptions of \$11.5 million and the distributions of \$1.7 million.

Performance

For the period ended June 30, 2021, the Fund generated returns of 7.8% for Class A0. The 80% S&P/TSX Composite and the 20% FTSE Canada Bond Universe Index (the “Benchmark index”) returned 12.9% over the same period. The difference in performance between classes is mainly due to Management Fee of each class. Please refer to the ‘Past Performance’ section of this report for performance of each class.

The following comments apply to the fixed income portion of the fund.

The Fund’s overweight in corporate bonds relative to the benchmark, during a period of economic optimism as the vaccine rollout in North America accelerates and economic reopening plans occur. Balance sheets are strong and capital expenditure programs remain in check as companies take advantage of attractive levels of financing while demand for higher yield remain unrelinquished. Credit spreads tightened over the first half of 2021 leading the Fund to outperform on a gross of fees basis.

The following comments apply to the equity portion of the fund.

The Fund’s underperformed compared to the Benchmark index because it owned stocks that detracted from the performance, such as CN Rail, in the equity allocation of the Fund.

Market Performance

The following comments apply to the fixed income portion of the fund.

The market sentiment was very positive. Central banks’ messaging on inflation being “transitory” has finally taken a stronger hold. The concern over rates did not cause concern for credit spreads in general. The Federal Reserve suggested that rate increases probably would not be seen until later with the dot plots implying the first hikes to occur at the end of 2023. The Bank of Canada similarly committed to holding rates at lower bound until economic slack is absorbed which is projected to be in the second half of 2022. The market struggling to grab a footing with economic growth and concerns over inflation, finally succumbed to central banks’ less hawkish stance. Global economies slowly started to reopen as some restrictions eased and vaccine rolls out accelerated. However, inflation concerns and Covid-19 variants continue to pose as potential threats.

The Canadian Government yield curve finished the period lower and flatter but not without experiencing some volatility, especially in the long end. Corporate bonds experienced strong demand for most of the period as demand for yield overshadowed any credit concerns or M&A activity. Credit spreads continued their tightening path despite a slower start of vaccine rollouts and lockdown restrictions in place for most of the first half of the year. Most credit sectors finished the first half through pre-pandemic levels.

MANAGEMENT DISCUSSION OF FUND PERFORMANCE – Continued

Risk assets remained well supported through the first half as central banks reiterated their expectations of inflation being transitory. Expectations of strong growth over the next 2 years along with unemployment data coming in stronger than expected, fuelled strong demand for credit. Companies continued to take advantage of the low rate environment and the pre-funding that was seen in 2020 continued in the first half. Equally impressive was the amount of issuance that was able to be digested by the market as investors' insatiable appetite for yield continued. Corporate balance sheets improved, Canadian bank earnings continued to surpass expectations, monetary policy was unchanged, and economic outlooks were revised higher. As the first half of the year progressed, the vaccine roll outs accelerated and restrictions began to ease, setting up the positive tone that would continue until the end of the period.

In Canada, employment levels continued to improve despite slowing in April and May as the country experienced a third wave of restrictions. Nevertheless, unemployment improved to 8.2%, consumer spending improved and the strong loonie will help to keep the Bank of Canada from acting too quickly in raising rates. These factors will drive the positive tone as many economic forecasts have been upwardly revised for the next couple of years.

The tone of the market finished quite positively for corporate credit. An accelerated vaccine rollout overshadowed a third wave of infections resulting in new Covid cases declining at a steep pace. These low levels of infections have given the Canadian government the confidence to lift restrictions in a measured way. In the U.S., bi-partisan approval of more stimulus and infrastructure spend has paved the way for economic growth and consumer confidence that would fuel risk assets for the next quarter. With policy makers reiterating "transitory" inflation and a very measured approach to raising rates in the future, companies feel confident to continue their pre-funding activity and or debt-funded M&A activity, feeding the insatiable demand for yield in the current low yield environment. Despite demand for credit being very impressive, primary supply could underwhelm for the second half the year. This would be supportive for credit. As spreads continue to touch new tight levels, risks remain in aggressive monetary policy, longer lasting structural inflation, China tensions, and the potential spread of the "delta" variant. The corporate bond market will remain cautiously optimistic for the remainder of the year.

The following comments apply to the equity portion of the fund.

The S&P/TSX index gained 17.3% for the first half of 2021. The top-performing sectors were Energy (+36.9%), Financials (23.4%) and Health Care (22.7%). The worst-performing sectors were Materials (-0.44%), Utilities (4.9%) and Industrials (6.7%).

Fund Performance

The following comments apply to the fixed income portion of the fund.

The beginning of the year started off on a positive footing. The Fund underperformed its Benchmark, as corporate spreads continued to tighten as demand for yield was very strong. In general, corporate spreads only experienced tightening with only a few short-lived moments of widening as markets grappled with strong growth and potential higher than expected inflation. Higher beta securities outperformed. Liquidity remained strong. Strong corporate earnings and continued government stimulus helped to support credit. Impressive primary supply was overshadowed by the strong demand for yield. The Fund's overweight position in Corporate credit enhanced performance through the period, leading the Fund to outperform its Benchmark on a gross of fees basis.

The Securitization sector contributed significantly on an absolute and relative basis during the period. The Financial sector closely followed suit also outperforming on an absolute and relative basis. The Fund's Securitization exposure consists predominantly of bank and non-bank sponsored credit card receivable programs, as well as commercial mortgage-backed securities. These securities proved to be resilient as Canadian banks anticipated a rise in default rates and late payments that never came to fruition during the pandemic.

The Fund's Financial exposure, which consists of non-traditional bank holdings and Canadian Banks Limited Recourse Capital Notes (LRCN) experienced significant gains during the first half of the year as rates remained generally low and demand for higher yielding securities from strong regulated banks became strong. Mortgage and credit card defaults did not occur to the extent that was being anticipated and banks were able to release some of reserve that was set aside for such an event. Despite much issuance by Canadian financials, demand for higher yielding product overshadowed.

Overall, corporate spreads outperformed Provincial bonds during the period. The Provincial sector is

MANAGEMENT DISCUSSION OF FUND PERFORMANCE – Continued

dominated by longer date maturities. With long term yields moving more violently during the period, as 30 year rates more than doubling over the period, Provincials underperformed Corporate Bonds. The Fund, never relying on interest rate movement for outperformance, was able to select securities and position itself to benefit the most from a rally in corporate spreads. In the end, the Fund's overweight exposure in Corporate credit that would benefit the most from a recovery, with solid cash flow metrics and risk characteristics, would be the largest driver of outperformance versus its Benchmark.

The following comments apply to the equity portion of the fund.

The top contributors to the equity allocation of the Fund included National Bank (TSX:NA) and Bank of Montreal (TSX:BMO).

National Bank is one of the top six largest Canadian banks, with a leading franchise in Quebec. The company has a good track record: over the past 20 years, National has outperformed its peers and the TSX in growing shareholder returns. The bank recently reported strong earnings due to a substantial reversal in provision for credit losses and growth in its residential mortgages business.

Bank of Montreal has also performed well due to an improved credit outlook, leading to lower than expected credit losses. BMO reported strong results across all its operating segments, especially the capital markets and wealth management divisions. In general, bank stocks are benefitting from brighter macro conditions and expectations of a reopening economy.

The top detractors to the equity allocation of the Fund included CN Rail (TSX:CNR).

CN Rail is one of Canada's largest companies by market capitalization, transporting more than C\$250bn of goods every year across North America. In 2021, CN and CP Rail submitted competing bids for control of an American railway called Kansas City Southern (KCS). KCS has accepted CN's bid of US\$33.6bn and the merger awaits regulatory approval.

Railroad volumes have performed well this year and the fundamental outlook is positive. However, investors remain hesitant on the prospects of the CN-KCS deal. If the merger fails to clear regulatory hurdles, CN would be on the hook for a US\$1bn break fee and may lose KCS to competitor CP Rail.

Significant Transactions

The following comments apply to the fixed income portion of the fund.

Last year, the Fund was closer to its lower-bound range of credit exposure. As the economy learned to live with Covid-19 and begin its recovery, the Fund re-evaluated and began to add to its credit exposure. The Fund took a very calculated approach to adding credit risk, taking advantage of deeply discounted valuations and some arbitrage opportunities among sectors and ratings. Government and Central bank stimulus, along with the expectation of accommodative monetary policy for a longer period of time, gave the portfolio managers confidence that credit risk premiums would be strongly sought out by market participants.

The Fund selectively participated in the extensive supply of new issues. The Fund focused on higher beta Financials by buying Canadian Bank and Insurance Company Limited Recourse Capital Notes (LRCN). The Fund bought SunLife Financial 3.6% June 2026s at a risk premium of 2.6% above Government of Canada. This would be 2.0% more versus a similar maturity bail-in and is the only LRCN to have an "A" rating by all its rating agencies. The Fund took advantage of steep credit curves and positioned itself in the most optimal point by extending its position in Federation des Caisses Desjardins from 2025s into 2026s, Canadian Western Bank from 2025s into 2026s as well as Athene Global Funding 2025s into 2028s. The Fund took opportunities to improve its credit quality and yield without overly extending risk.

Expenses

There have been no significant changes in the fee structure of the Fund for the period ended June 30, 2021.

Management expenses ratios ("MER") increased over the period ended June 30, 2021. This fluctuation is mainly due to decrease in the Fund average net assets by 9%.

Distributions

Distributions, as declared by the Manager, are made on a monthly basis to unitholders of record on the last business day of each month for classes A2, A3, A5, F2 and F5. Distributions are made on an annually basis to unitholders of record on the last business day of each year for classes A0 and F0. Distributions for Class O are at the discretion of the Manager. For the period ended June 30, 2021, the Fund declared a total distribution of \$0.12 per Class A2 unit, \$0.18 per Class A3 unit, \$0.30 per Class A5 unit, \$0.12 per Class F2 unit and \$0.30 per Class F5 unit.

MANAGEMENT DISCUSSION OF FUND PERFORMANCE – Continued

Recent Developments

Perspectives

There have been no developments or changes to the team or management style of the Fund.

The following comments apply to the equity portion of the fund.

The TSX has done very well in the first half of 2021, gaining around 17% and outperforming the S&P500. The gradual re-opening of the Canadian economy is underway. Investor confidence has been fuelled by a strong vaccine roll-out. So far, Canada has fully vaccinated over 49% of the population ages 12+, with over 75% receiving at least their first dose. Case numbers are dropping, and non-essential businesses are slowly reopening. Many people are eager to shop, travel, socialize and dine at their favorite restaurants.

The last earnings season was very positive, especially for the banks. Commodity markets have also improved significantly, including oil, which leads to a big push for the Canadian economy. The market ended on a bullish note for the first half of 2021.

Outlook

The following comments apply to the fixed income portion of the fund.

The portfolio managers anticipate that yields will continue to remain low for the foreseeable future. Globally, central banks will continue their accommodative stance until the COVID-19 pandemic has subsided, restrictions are completely lifted, more re-hiring takes place, and growth is sustainable. The tone of the market will dictate the direction of yields and spreads.

During the second half of 2021, we expect the economy to slowly reopen as restrictions are eased. The second half of the year will be guided by the continued increasing rate of inoculations as well as growth and inflation expectations. Households continue to have high savings and will look to spend as restrictions are lifted. Growth expectations have been revised higher for the next couple of years and global central banks continue to reiterate that inflation concerns are transitory. Corporations continue to experience positive momentum in earnings and balance sheets remain strong as they continue to access cheap refinancing. Issuance continues to be impressive and easily absorbed by market participants starved for yield. Corporate spreads will trade range bound, with already reaching pre-pandemic tight levels but with no foreseeable catalyst to move

significantly wider. The largest risks to this outlook will be renewed lockdowns and restrictions driven from the spread of the “delta” variant and/or central banks tightening monetary policy or tapering too soon with little forewarning.

Additionally, the rate of corporate issuance will impact corporate spreads. 2021 has seen an impressive amount of issuance during the first half. Most of this issuance continues to be driven by corporate treasurers improving their balance sheet, refinancing or prefunding at cheaper levels. Corporate balance sheets, earnings, and liquidity remain strong which continues to be supportive for credit spreads.

The Fund is well positioned to take advantage of a continued rally in risk or a retracement. The Fund is positioned to be cautiously optimistic as it is positioned high quality Financials, Midstream and Regulated Utilities. Securitization will continue to be a core holding as the sector continue to exhibit strong fundamentals and performance. The higher mortgage deferrals and credit card defaults that Canadian banks and non-bank financials were preparing to experience did not come to fruition. The Fund will continue to maintain its duration neutral position versus its Benchmark. Most of the outperformance will come from security selection and running yield. The Fund will continue to focus on companies with good liquidity, strong and improving cash flow generations and risk characteristics, and that display a commitment to their business models, bond ratings, and bondholders in a post COVID environment.

Going forward, the Fund will continue to have a core holding in the Securitization sector, as this sector continues to exhibit strong fundamentals and performance during the recovery phase. Regulated utilities, well capitalized Canadian banks, strong cash flow generating pipelines will continue to be a focus within the portfolio. The Fund will continue to be duration neutral to the Benchmark, as the direction of yields remain highly correlated to central banks’ commitment to monetary policy and growth and inflation concerns. It is anticipated that most of its outperformance will come from security selection and running yield. The Fund will continue to focus on solid trading liquidity as well as defensive characteristics as it navigates through the recovery.

The following comments apply to the equity portion of the fund.

Our outlook for 2021 remains unchanged as we continue to stay disciplined and committed to following our

MANAGEMENT DISCUSSION OF FUND PERFORMANCE – Continued

investment philosophy. We remain focused on investing in high-quality companies with a demonstrated ability to compound intrinsic value over time, with our portfolio continuing to trade at a discount to intrinsic value.

Related Party Transactions

Fiera is the Manager and portfolio advisor of the Fund pursuant to the administration agreement. The Manager ensures the daily administration of the Fund. It provides or ensures the Fund is provided with all services (accounting, custodial, portfolio management, record maintenance, transfer agent) required to function properly. For providing its services to the Fund, the Manager receives annual management fees from the Fund equal to a percentage of each classes Net Asset Value. For further information on the management fees and service fees of the Fund, please refer to the Financial Highlights section of the present document.

Also, Fiera charges fund accounting fees to the Fund, which are allocated using the average weight of the Net Asset Value of each Fiera funds, and which are calculated and accrued on each valuation day and payable quarterly.

As at June 30, 2021, a related shareholder owned class B shares representing 7.00% of Fiera's issued and outstanding shares.

This related shareholder is entitled to appoint two of the eight directors of Fiera that the holders of class B shares are entitled to elect. Transaction costs presented in the statements of comprehensive income, if any, may include brokerage fees paid to this related shareholder.

Related party transactions presented in the financial statements incurred by the Fund with the Manager are as follows:

	As at June 30, 2021
Management fees	\$ 829,152
Fund accounting fees	9,633
Expenses waived/absorbed by manager	(131,782)
Due from manager	82,743
Management fees payable	321,720
Fund accounting fees payable	3,581

FINANCIAL HIGHLIGHTS

The following tables show selected key financial information about the Fund and are intended to help you understand the Fund's financial performance for the six-month period ended June 30, 2021 and for the past 5 years, where applicable.

imaxx Canadian Fixed Pay Fund

	Six-month period ended		Years ended December 31,			
	June 30, 2021	2020	2019	2018	2017	2016
Class A0						
The Fund's Net Assets per Unit ^{(1) (8)}						
Net Assets, beginning of the period	\$ 11.64	\$ 10.50	\$ 9.51	\$ 10.35	\$ 10.00	n/a
Increase (decrease) from operations:						
Total revenue	0.12	0.27	0.29	0.33	0.32	n/a
Total expenses	(0.14)	(0.26)	(0.25)	(0.24)	(0.14)	n/a
Realized gains (losses) for the period	0.20	0.40	0.46	0.52	0.35	n/a
Unrealized gains (losses) for the period	0.72	0.80	0.63	(1.70)	(0.08)	n/a
Total increase (decrease) from operations ⁽²⁾	0.90	1.21	1.13	(1.09)	0.45	n/a
Distributions:						
From income (excluding dividends)	—	—	—	—	—	n/a
From dividends	—	—	—	—	—	n/a
From capital gains	—	—	—	—	—	n/a
Return of capital	—	—	—	—	—	n/a
Total annual distributions ⁽³⁾	—	—	—	—	—	n/a
Net Assets, end of the period	\$ 12.55	\$ 11.64	\$ 10.50	\$ 9.51	\$ 10.35	n/a
Ratios and Supplemental Data						
Net Asset Value (\$ 000's) ⁽⁴⁾	2,172	2,163	1,803	2,102	300	n/a
Number of units outstanding (000's) ⁽⁴⁾	173	186	172	221	29	n/a
Management expense ratio excluding interest and issuance costs (%)	n/a	n/a	n/a	n/a	n/a	n/a
Management expense ratio (%) ⁽⁵⁾	2.40	2.36	2.43	2.30	2.26	n/a
Management expense ratio before waivers or absorptions (%)	2.40	2.36	2.43	2.30	2.26	n/a
Portfolio turnover rate (%) ⁽⁶⁾	11.76	24.60	96.82	72.88	69.49	n/a
Trading expense ratio (%) ⁽⁷⁾	0.01	—	0.08	0.08	0.05	n/a
Net Asset Value per unit	\$ 12.55	\$ 11.64	\$ 10.50	\$ 9.51	\$ 10.35	n/a
Class A2						
The Fund's Net Assets per Unit ⁽¹⁾						
Net Assets, beginning of the period	\$ 6.96	\$ 6.51	\$ 6.11	\$ 7.21	\$ 7.65	\$ 8.13
Increase (decrease) from operations:						
Total revenue	0.07	0.13	0.19	0.21	0.24	0.25
Total expenses	(0.08)	(0.15)	(0.15)	(0.16)	(0.18)	(0.21)
Realized gains (losses) for the period	0.12	0.24	0.29	0.36	0.26	0.21
Unrealized gains (losses) for the period	0.42	0.44	0.38	(0.86)	0.20	0.26
Total increase (decrease) from operations ⁽²⁾	0.53	0.66	0.71	(0.45)	0.52	0.51
Distributions:						
From income (excluding dividends)	—	—	—	—	—	—
From dividends	(0.12)	(0.05)	(0.08)	(0.09)	(0.11)	(0.08)
From capital gains	—	(0.18)	(0.14)	(0.22)	(0.18)	(0.18)
Return of capital	—	(0.01)	(0.02)	(0.23)	(0.67)	(0.70)
Total annual distributions ⁽³⁾	(0.12)	(0.24)	(0.24)	(0.54)	(0.96)	(0.96)
Net Assets, end of the period	\$ 7.38	\$ 6.96	\$ 6.51	\$ 6.11	\$ 7.21	\$ 7.65
Ratios and Supplemental Data						
Net Asset Value (\$ 000's) ⁽⁴⁾	64,009	64,643	72,700	92,206	183,875	176,561
Number of units outstanding (000's) ⁽⁴⁾	8,673	9,288	11,165	15,085	25,516	23,080
Management expense ratio excluding interest and issuance costs (%)	n/a	n/a	n/a	n/a	n/a	n/a
Management expense ratio (%) ⁽⁵⁾	2.31	2.28	2.30	2.30	2.40	2.60
Management expense ratio before waivers or absorptions (%)	2.31	2.28	2.30	2.30	2.40	2.63
Portfolio turnover rate (%) ⁽⁶⁾	11.76	24.60	96.82	72.88	69.49	109.57
Trading expense ratio (%) ⁽⁷⁾	0.01	—	0.08	0.08	0.05	0.14
Net Asset Value per unit	\$ 7.38	\$ 6.96	\$ 6.51	\$ 6.11	\$ 7.21	\$ 7.65

FINANCIAL HIGHLIGHTS – Continued

imaxx Canadian Fixed Pay Fund

	Six-month period ended June 30,	Years ended December 31,				
	2021	2020	2019	2018	2017	2016
Class A3						
The Fund's Net Assets per Unit ^{(1) (8)}						
Net Assets, beginning of the period	\$ 10.43	\$ 9.75	\$ 9.13	\$ 10.32	\$ 10.00	n/a
Increase (decrease) from operations:						
Total revenue	0.11	0.21	0.27	0.32	0.32	n/a
Total expenses	(0.13)	(0.22)	(0.21)	(0.24)	(0.12)	n/a
Realized gains (losses) for the period	0.18	0.36	0.47	0.53	0.35	n/a
Unrealized gains (losses) for the period	0.64	0.76	0.45	(1.88)	0.08	n/a
Total increase (decrease) from operations ⁽²⁾	0.80	1.11	0.98	(1.27)	0.63	n/a
Distributions:						
From income (excluding dividends)	–	–	–	–	–	n/a
From dividends	(0.18)	(0.07)	(0.12)	(0.21)	(0.11)	n/a
From capital gains	–	(0.28)	(0.21)	(0.15)	(0.18)	n/a
Return of capital	–	(0.01)	(0.03)	–	(0.67)	n/a
Total annual distributions ⁽³⁾	(0.18)	(0.36)	(0.36)	(0.36)	(0.96)	n/a
Net Assets, end of the period	\$ 11.05	\$ 10.43	\$ 9.75	\$ 9.13	\$ 10.32	n/a
Ratios and Supplemental Data						
Net Asset Value (\$ 000's) ⁽⁴⁾	342	321	342	339	80	n/a
Number of units outstanding (000's) ⁽⁴⁾	31	31	35	37	8	n/a
Management expense ratio excluding interest and issuance costs (%)	n/a	n/a	n/a	n/a	n/a	n/a
Management expense ratio (%) ⁽⁵⁾	2.39	2.01	2.14	2.32	2.37	n/a
Management expense ratio before waivers or absorptions (%)	2.40	2.19	2.14	2.32	2.37	n/a
Portfolio turnover rate (%) ⁽⁶⁾	11.76	24.60	96.82	72.88	69.49	n/a
Trading expense ratio (%) ⁽⁷⁾	0.01	–	0.08	0.08	0.05	n/a
Net Asset Value per unit	\$ 11.05	\$ 10.43	\$ 9.75	\$ 9.13	\$ 10.32	n/a
Class A5						
The Fund's Net Assets per Unit ^{(1) (8)}						
Net Assets, beginning of the period	\$ 9.23	\$ 8.91	\$ 8.61	\$ 9.99	\$ 10.00	n/a
Increase (decrease) from operations:						
Total revenue	0.10	0.18	0.26	0.31	0.31	n/a
Total expenses	(0.11)	(0.20)	(0.20)	(0.23)	(0.13)	n/a
Realized gains (losses) for the period	0.16	0.32	0.42	0.52	0.34	n/a
Unrealized gains (losses) for the period	0.56	0.62	0.43	(1.73)	0.06	n/a
Total increase (decrease) from operations ⁽²⁾	0.71	0.92	0.91	(1.13)	0.58	n/a
Distributions:						
From income (excluding dividends)	–	–	–	–	–	n/a
From dividends	(0.30)	(0.12)	(0.20)	(0.22)	(0.11)	n/a
From capital gains	–	(0.46)	(0.35)	(0.38)	(0.18)	n/a
Return of capital	–	(0.02)	(0.05)	–	(0.67)	n/a
Total annual distributions ⁽³⁾	(0.30)	(0.60)	(0.60)	(0.60)	(0.96)	n/a
Net Assets, end of the period	\$ 9.64	\$ 9.23	\$ 8.91	\$ 8.61	\$ 9.99	n/a
Ratios and Supplemental Data						
Net Asset Value (\$ 000's) ⁽⁴⁾	19,315	19,267	20,120	19,905	1,662	n/a
Number of units outstanding (000's) ⁽⁴⁾	2,003	2,087	2,257	2,311	166	n/a
Management expense ratio excluding interest and issuance costs (%)	n/a	n/a	n/a	n/a	n/a	n/a
Management expense ratio (%) ⁽⁵⁾	2.31	2.21	2.25	2.30	2.31	n/a
Management expense ratio before waivers or absorptions (%)	2.31	2.25	2.25	2.30	2.31	n/a
Portfolio turnover rate (%) ⁽⁶⁾	11.76	24.60	96.82	72.88	69.49	n/a
Trading expense ratio (%) ⁽⁷⁾	0.01	–	0.08	0.08	0.05	n/a
Net Asset Value per unit	\$ 9.64	\$ 9.23	\$ 8.91	\$ 8.61	\$ 9.99	n/a

FINANCIAL HIGHLIGHTS – Continued

imaxx Canadian Fixed Pay Fund

	Six-month period ended June 30, 2021	Years ended December 31,				
		2020	2019	2018	2017	2016
Class F0						
The Fund's Net Assets per Unit ^{(1) (8)}						
Net Assets, beginning of the period	\$ 12.37	\$ 11.03	\$ 9.87	\$ 10.62	\$ 10.00	n/a
Increase (decrease) from operations:						
Total revenue	0.13	0.22	0.31	0.34	0.33	n/a
Total expenses	(0.08)	(0.13)	(0.13)	(0.12)	(0.05)	n/a
Realized gains (losses) for the period	0.21	0.41	0.56	0.58	0.36	n/a
Unrealized gains (losses) for the period	0.75	0.76	0.33	(1.58)	(0.03)	n/a
Total increase (decrease) from operations ⁽²⁾	1.01	1.26	1.07	(0.78)	0.61	n/a
Distributions:						
From income (excluding dividends)	–	–	–	–	–	n/a
From dividends	–	–	–	–	–	n/a
From capital gains	–	–	–	–	–	n/a
Return of capital	–	–	–	–	–	n/a
Total annual distributions ⁽³⁾	–	–	–	–	–	n/a
Net Assets, end of the period	\$ 13.41	\$ 12.37	\$ 11.03	\$ 9.87	\$ 10.62	n/a
Ratios and Supplemental Data						
Net Asset Value (\$ 000's) ⁽⁴⁾	199	224	263	453	222	n/a
Number of units outstanding (000's) ⁽⁴⁾	15	18	24	46	21	n/a
Management expense ratio excluding interest and issuance costs (%)	n/a	n/a	n/a	n/a	n/a	n/a
Management expense ratio (%) ⁽⁵⁾	1.09	1.10	1.17	1.13	1.18	n/a
Management expense ratio before waivers or absorptions (%)	1.20	1.17	1.17	1.13	1.18	n/a
Portfolio turnover rate (%) ⁽⁶⁾	11.76	24.60	96.82	72.88	69.49	n/a
Trading expense ratio (%) ⁽⁷⁾	0.01	–	0.08	0.08	0.05	n/a
Net Asset Value per unit	\$ 13.41	\$ 12.37	\$ 11.03	\$ 9.87	\$ 10.62	n/a
Class F2						
The Fund's Net Assets per Unit ⁽¹⁾						
Net Assets, beginning of the period	\$ 7.90	\$ 7.27	\$ 6.72	\$ 7.78	\$ 8.10	\$ 8.47
Increase (decrease) from operations:						
Total revenue	0.08	0.15	0.22	0.23	0.25	0.26
Total expenses	(0.05)	(0.08)	(0.08)	(0.09)	(0.10)	(0.14)
Realized gains (losses) for the period	0.14	0.27	0.29	0.39	0.28	0.22
Unrealized gains (losses) for the period	0.47	0.51	0.62	(0.99)	0.21	0.37
Total increase (decrease) from operations ⁽²⁾	0.64	0.85	1.05	(0.46)	0.64	0.71
Distributions:						
From income (excluding dividends)	–	–	–	–	–	–
From dividends	(0.12)	(0.05)	(0.08)	(0.12)	(0.11)	(0.08)
From capital gains	–	(0.18)	(0.14)	(0.30)	(0.18)	(0.18)
Return of capital	–	(0.01)	(0.02)	(0.12)	(0.67)	(0.70)
Total annual distributions ⁽³⁾	(0.12)	(0.24)	(0.24)	(0.54)	(0.96)	(0.96)
Net Assets, end of the period	\$ 8.44	\$ 7.90	\$ 7.27	\$ 6.72	\$ 7.78	\$ 8.10
Ratios and Supplemental Data						
Net Asset Value (\$ 000's) ⁽⁴⁾	768	795	976	2,513	3,379	2,058
Number of units outstanding (000's) ⁽⁴⁾	91	101	134	374	434	254
Management expense ratio excluding interest and issuance costs (%)	n/a	n/a	n/a	n/a	n/a	n/a
Management expense ratio (%) ⁽⁵⁾	1.13	1.03	1.12	1.13	1.24	1.53
Management expense ratio before waivers or absorptions (%)	1.20	1.13	1.12	1.13	1.24	1.56
Portfolio turnover rate (%) ⁽⁶⁾	11.76	24.60	96.82	72.88	69.49	109.57
Trading expense ratio (%) ⁽⁷⁾	0.01	–	0.08	0.08	0.05	0.14
Net Asset Value per unit	\$ 8.44	\$ 7.90	\$ 7.27	\$ 6.72	\$ 7.78	\$ 8.10

FINANCIAL HIGHLIGHTS – Continued

imaxx Canadian Fixed Pay Fund

	Six-month period ended June 30,		Years ended December 31,			
	2021	2020	2019	2018	2017	2016
Class F5						
The Fund's Net Assets per Unit ^{(1) (8)}						
Net Assets, beginning of the period	\$ 10.03	\$ 9.54	\$ 9.08	\$ 10.38	\$ 10.00	n/a
Increase (decrease) from operations:						
Total revenue	0.11	0.20	0.27	0.32	0.32	n/a
Total expenses	(0.06)	(0.11)	(0.11)	(0.12)	(0.04)	n/a
Realized gains (losses) for the period	0.18	0.31	0.44	0.56	0.35	n/a
Unrealized gains (losses) for the period	0.61	(0.18)	0.65	(1.56)	(0.06)	n/a
Total increase (decrease) from operations ⁽²⁾	0.84	0.22	1.25	(0.80)	0.57	n/a
Distributions:						
From income (excluding dividends)	–	–	–	–	–	n/a
From dividends	(0.30)	(0.12)	(0.20)	(0.17)	(0.11)	n/a
From capital gains	–	(0.46)	(0.35)	(0.41)	(0.18)	n/a
Return of capital	–	(0.02)	(0.05)	(0.02)	(0.67)	n/a
Total annual distributions ⁽³⁾	(0.30)	(0.60)	(0.60)	(0.60)	(0.96)	n/a
Net Assets, end of the period	\$ 10.57	\$ 10.03	\$ 9.54	\$ 9.08	\$ 10.38	n/a
Ratios and Supplemental Data						
Net Asset Value (\$ 000's) ⁽⁴⁾	106	101	186	232	104	n/a
Number of units outstanding (000's) ⁽⁴⁾	10	10	19	26	10	n/a
Management expense ratio excluding interest and issuance costs (%)	n/a	n/a	n/a	n/a	n/a	n/a
Management expense ratio (%) ⁽⁵⁾	1.16	1.10	1.16	1.13	1.18	n/a
Management expense ratio before waivers or absorptions (%)	1.20	1.16	1.16	1.13	1.18	n/a
Portfolio turnover rate (%) ⁽⁶⁾	11.76	24.60	96.82	72.88	69.49	n/a
Trading expense ratio (%) ⁽⁷⁾	0.01	–	0.08	0.08	0.05	n/a
Net Asset Value per unit	\$ 10.57	\$ 10.03	\$ 9.54	\$ 9.08	\$ 10.38	n/a
Class O						
The Fund's Net Assets per Unit ^{(1) (8)}						
Net Assets, beginning of the period	\$ 11.88	\$ 10.47	\$ 9.26	\$ 10.00	n/a	n/a
Increase (decrease) from operations:						
Total revenue	0.13	0.25	0.29	0.18	n/a	n/a
Total expenses	–	–	–	–	n/a	n/a
Realized gains (losses) for the period	0.21	0.62	0.48	0.22	n/a	n/a
Unrealized gains (losses) for the period	0.73	0.90	0.43	(1.14)	n/a	n/a
Total increase (decrease) from operations ⁽²⁾	1.07	1.77	1.20	(0.74)	n/a	n/a
Distributions:						
From income (excluding dividends)	–	–	–	–	n/a	n/a
From dividends	–	–	–	–	n/a	n/a
From capital gains	–	–	–	–	n/a	n/a
Return of capital	–	–	–	–	n/a	n/a
Total annual distributions ⁽³⁾	–	–	–	–	n/a	n/a
Net Assets, end of the period	\$ 12.95	\$ 11.88	\$ 10.47	\$ 9.26	n/a	n/a
Ratios and Supplemental Data						
Net Asset Value (\$ 000's) ⁽⁴⁾	146,271	140,105	1	–	n/a	n/a
Number of units outstanding (000's) ⁽⁴⁾	11,293	11,797	–	–	n/a	n/a
Management expense ratio excluding interest and issuance costs (%)	n/a	n/a	n/a	n/a	n/a	n/a
Management expense ratio (%) ⁽⁵⁾	–	–	–	–	n/a	n/a
Management expense ratio before waivers or absorptions (%)	–	0.02	–	–	n/a	n/a
Portfolio turnover rate (%) ⁽⁶⁾	11.76	24.60	96.82	72.88	n/a	n/a
Trading expense ratio (%) ⁽⁷⁾	0.01	–	0.08	0.08	n/a	n/a
Net Asset Value per unit	\$ 12.95	\$ 11.88	\$ 10.47	\$ 9.26	n/a	n/a

FINANCIAL HIGHLIGHTS – Continued

imaxx Canadian Fixed Pay Fund

- (1) This information is derived from the Fund's unaudited semi-annual financial statements for the current period and the audited annual financial statements. The net assets per unit presented in the financial statements may differ from the net asset value calculated for fund transactional purposes. An explanation of these differences can be found in the notes to the financial statements, if applicable.
- (2) Net assets and distributions are based on the actual number of units outstanding at the relevant time. The increase/decrease from operations is based on the weighted average number of units outstanding over the financial period.
- (3) Distributions were paid in cash/reinvested in additional units of the Fund, or both.
- (4) The information is provided as at the last day of the period shown.
- (5) The management expense ratio is based on total expenses (excluding commissions and other portfolio transaction costs before income tax) for the stated period and is expressed as an annualized percentage of daily average net assets during the period.
- (6) The Fund's portfolio turnover rate indicates how actively the Fund's portfolio advisor manages its portfolio investments. A portfolio turnover rate of 100% is equivalent to the Fund buying and selling all of the securities in its portfolio once in the course of the period. The higher a fund's portfolio turnover in a period, the greater the trading costs payable by the Fund in the period, and the greater the chance of an investor receiving taxable capital gains in the period. There is not necessarily a relationship between a high turnover rate and the performance of a fund.
- (7) The trading expense ratio represents total commissions and other portfolio transaction costs expressed as an annualized percentage of daily average net assets during the period.
- (8) In 2017, Class A0, A3, A5, F0 and F5 were launched, commencing operations on May 26, 2017, July 14, 2017, June 9, 2017, August 25, 2017 and September 20, 2017. In 2018, Class O was launched, commencing operations on June 22, 2018.

Management Fees

The Fund may pay management fees to the Manager in consideration of the duties performed by the Manager for the fund pursuant to the Trust Agreement. These fees do not include any applicable taxes and custodian fees.

These management fees are payable on a monthly basis following the receipt by the trustee of an invoice from the Manager.

The management fee rates and the breakdown of the services received in consideration of management fees for each Class unit, as a percentage of the management fees, is as follows:

imaxx Canadian Fixed Pay Fund

	Management Fees %	Breakdown of Management Fees	
		Dealer Commissions ⁽¹⁾ %	Portfolio Advisory Services ⁽²⁾ %
Class A0	1.95	49.70	50.30
Class A2	1.95	35.22	64.78
Class A3	1.95	45.68	54.32
Class A5	1.95	38.66	61.34
Class F0	1.00	–	100.00
Class F2	1.00	–	100.00
Class F5	1.00	–	100.00
Class O ⁽³⁾	–	–	–

- (1) Dealer compensation represents cash commissions paid by Fiera to registered dealers during the year and includes upfront deferred sales charge and trailing commissions.
- (2) Includes Manager and Portfolio advisor compensation, transaction compliance, regulatory fees and insurance.
- (3) The annual management fees for Class O units are as agreed to by the Manager and the unitholders and are calculated and charged outside the Fund.

PAST PERFORMANCE

The performance information shown below assumes that all distributions made by the Fund were reinvested in additional units of the Fund. The performance information shown does not take into account sales, redemption, distribution or other optional charges that, if applicable, would have reduced returns or performance.

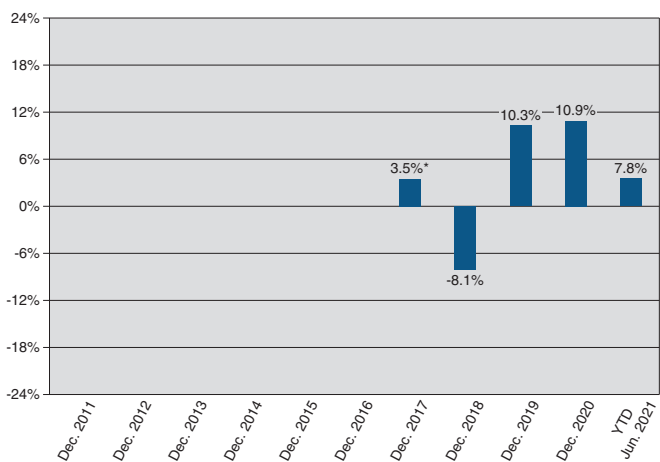
How the Fund performed in the past does not necessarily indicate how it will perform in the future.

Year-by-Year Returns

The following bar charts show the Fund's annual performance for each of the periods shown, and illustrate how the Fund's performance has changed from period to period. The chart shows, in percentage terms, how much an investment in the Fund made on the first day of each financial year would have grown or decreased by the last day of each financial year.

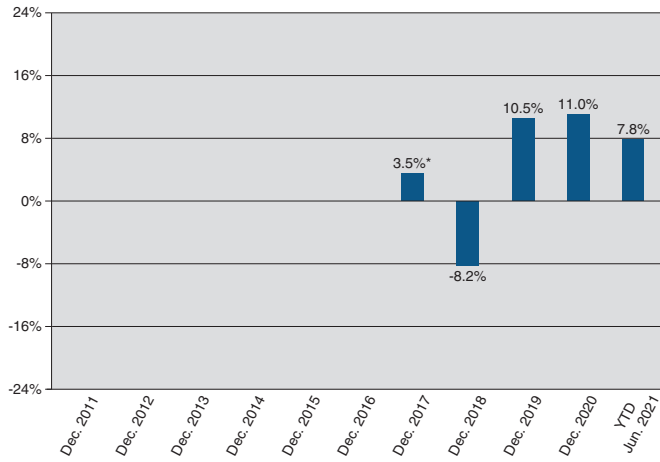
PAST PERFORMANCE – Continued

Class A0 Units – Annual returns



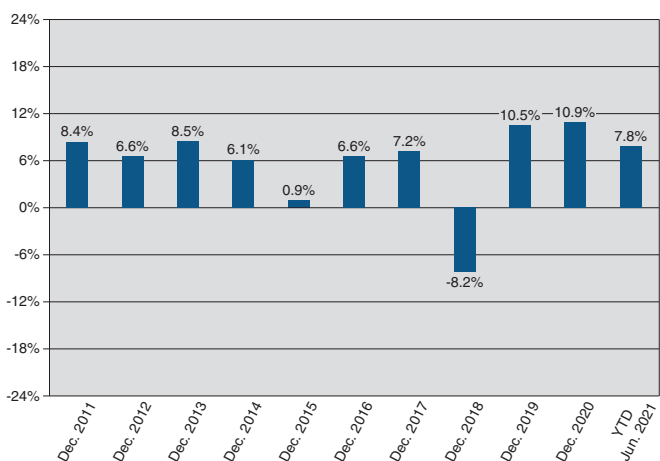
* From May 26, 2017 to December 31, 2017.

Class A5 Units – Annual returns

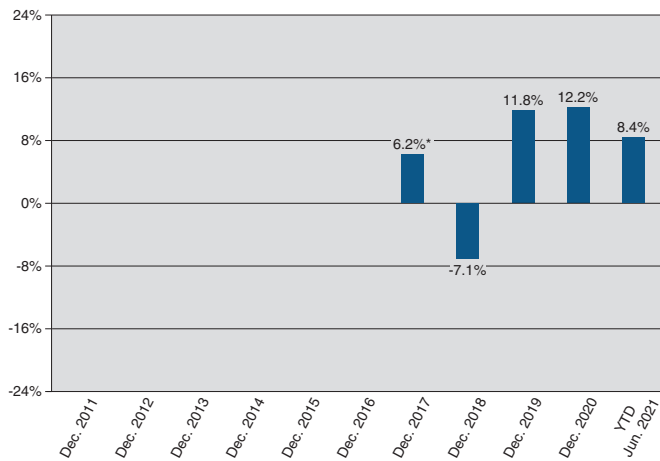


* From June 9, 2017 to December 31, 2017.

Class A2 Units – Annual returns

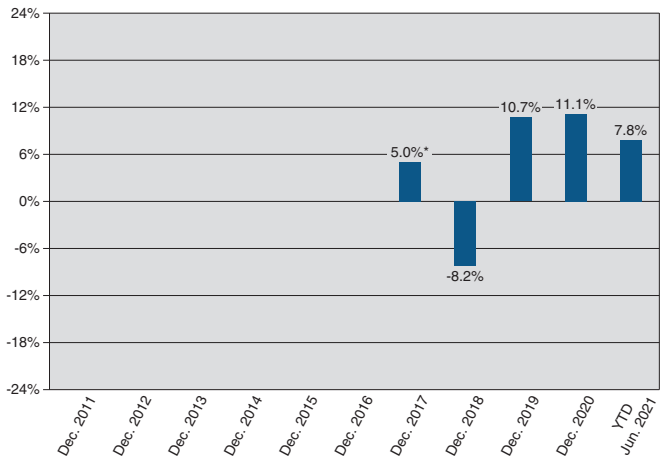


Class F0 Units – Annual returns



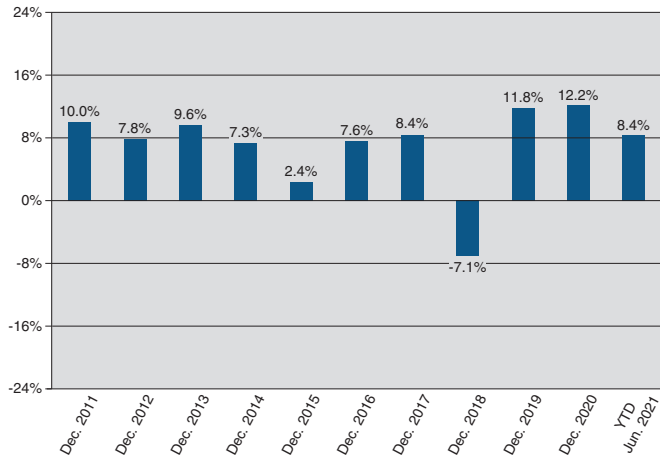
* From August 25, 2017 to December 31, 2017.

Class A3 Units – Annual returns



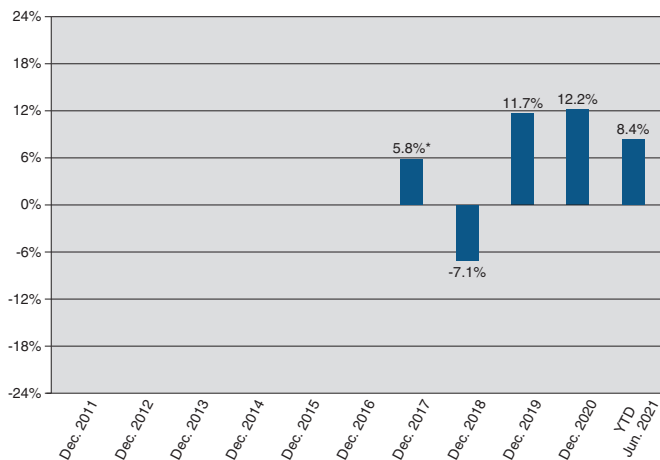
* From July 14, 2017 to December 31, 2017.

Class F2 Units – Annual returns



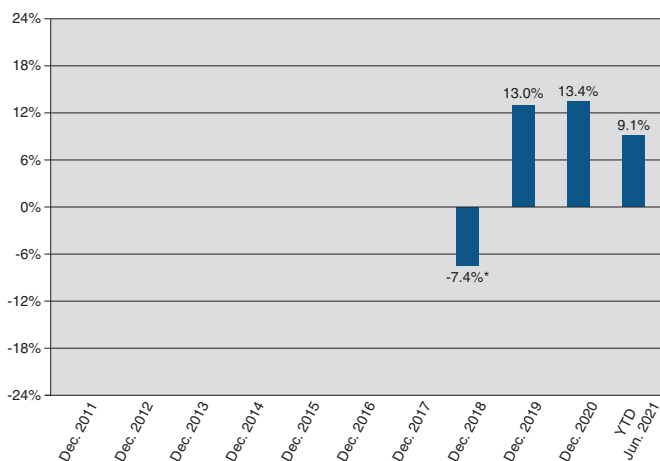
PAST PERFORMANCE – Continued

Class F5 Units – Annual returns



* From September 20, 2017 to December 31, 2017.

Class O Units – Annual returns



* From June 22, 2018 to December 31, 2018.

The inception date is the date when the class was formed and became available for sale to the public. The different dates are listed below:

	Inception Date
Class A0	May 26, 2017
Class A2	September 05, 2002
Class A3	July 14, 2017
Class A5	June 09, 2017
Class F0	August 25, 2017
Class F2	October 03, 2003
Class F5	September 30, 2017
Class O	June 22, 2018

SUMMARY OF INVESTMENT PORTFOLIO As at June 30, 2021

Sector Mix	Percentage of Net Asset Value (%)
Money Market Securities	
Canadian Money Market Securities	
Canadian Treasury Bills	0.8
Bonds and Debentures	
Canadian Bonds and Debentures	
Federal	3.1
Provincial	0.6
Corporate	8.2
U.S. Bonds and Debentures	
Corporate	0.4
Foreign Bonds and Debentures	
Australia	0.3
Equities	
Common Shares	
Canadian Common Shares	
Communication Services	1.3
Consumer Discretionary	3.3
Consumer Staples	6.1
Financials	21.0
Industrials	14.9
Information Technology	6.4
Materials	3.6
Media	2.1
U.S. Common Shares	
Consumer Discretionary	4.4
Consumer Staples	3.4
Financials	2.4
Health Care	1.8
Information Technology	5.8
Foreign Common Shares	
Ireland	2.7
United Kingdom	1.9
Asset-Backed Securities	3.4
Mortgage-Backed Securities	2.1
Forward Currency Contracts	(0.6)
Net Other Assets (Liabilities)	0.6
	100.0

Portfolio's Securities by Rating Category	Percentage of Net Asset Value (%)
AAA+/AAA/AAA-	5.4
AA+/AA/AA-	2.2
A+/A/A-	4.6
BBB+/BBB/BBB-	6.7
	18.9

SUMMARY OF INVESTMENT PORTFOLIO – Continued

Top 25 Investments		Percentage of Net Asset Value (%)
1	Toromont Industries Ltd.	3.9
2	Canadian Pacific Railway Ltd.	3.9
3	Constellation Software Inc.	3.8
4	Brookfield Asset Management Inc.	3.6
5	Royal Bank of Canada	3.5
6	Costco Wholesale Corp.	3.4
7	Mastercard Inc.	3.4
8	Toronto-Dominion Bank	3.3
9	National Bank of Canada	3.1
10	Bank of Montreal	2.9
11	Metro Inc.	2.8
12	Canadian National Railway Co.	2.8
13	Accenture PLC	2.7
14	Thomson Reuters Corp.	2.7
15	Visa Inc.	2.4
16	FactSet Research Systems Inc.	2.4
17	Intact Financial Corp.	2.4
18	TJX Cos Inc.	2.3
19	CGI Inc.	2.3
20	CCL Industries Inc.	2.3
21	TMX Group Ltd.	2.2
22	McDonald's Corp.	2.2
23	Loblaw Cos Ltd.	2.1
24	Dollarama Inc.	2.1
25	Quebecor Inc.	2.1
		70.6

Total Net Asset Value: \$233,182,699

The summary of investment portfolio may change due to ongoing portfolio transactions of the Fund.

(This page intentionally left blank)

(This page intentionally left blank)

(This page intentionally left blank)

— CLIENT SERVICES

North America			
MONTREAL Fiera Capital Corporation 1981 McGill College Avenue Suite 1500 Montreal, Quebec H3A 0H5 T 1 800 361-3499	TORONTO Fiera Capital Corporation 200 Bay Street, Suite 3800, South Tower Toronto, Ontario, Canada M5J 2J1 T 1 800 994-9002	CALGARY Fiera Capital Corporation 607 8th Avenue SW Suite 300 Calgary, Alberta T2P 0A7 T 403 699-9000	info@fieracapital.com fiera.com
NEW YORK Fiera Capital Inc. 375 Park Avenue 8th Floor New York, New York 10152 T 212 300-1600	BOSTON Fiera Capital Inc. One Lewis Wharf 3rd Floor Boston, Massachusetts 02110 T 857 264-4900	DAYTON Fiera Capital Inc. 10050 Innovation Drive Suite 120 Dayton, Ohio 45342 T 937 847-9100	
Europe		Asia	
LONDON Fiera Capital (UK) Limited Queensberry House, 3 Old Burlington Street, 3rd Floor, London, United Kingdom W1S 3AE T +44 (0) 207 409 5500	FRANKFURT Fiera Capital (Germany) GmbH Walther-von-Cronberg-Platz 13 Frankfurt, Germany 60594 T +49 69 9202 0750	HONG KONG Fiera Capital (Asia) Hong Kong Limited Suite 3205, No. 9 Queen's Road Central, Hong Kong T 852-3713-4800	SINGAPORE Fiera Capital (Asia) Singapore Pte. Ltd. 6 Temasek Boulevard #38-03 Suntec Tower 4 Singapore 038986

With offices across Canada, the United States, the United Kingdom, Europe and Asia, the firm has over 800 employees and is dedicated to servicing our highly diversified clientele. To see the locations, please visit fiera.com

FORWARD-LOOKING STATEMENT

Some of the statements contained herein including, without limitation, financial and business prospects and financial outlook may be forward-looking statements which reflect management's expectations regarding future plans and intentions, growth, results of operations, performance and business prospects and opportunities. Words such as "may," "will," "should," "could," "anticipate," "believe," "expect," "intend," "plan," "potential," "continue" and similar expressions have been used to identify these forward-looking statements.

These statements reflect management's current beliefs and are based on information currently available to management. Forward-looking statements involve significant risks and uncertainties. A number of factors could cause actual results to differ materially from the results discussed in the forward-looking statements including, but not limited to, changes in general economic and market conditions and other risk factors. Although the forward-looking statements contained herein are based on what management believes to be reasonable assumptions, we cannot assure that actual results will be consistent with these forward-looking statements. Investors should not place undue reliance on forward-looking statements. These forward-looking statements are made as of the date hereof and we assume no obligation to update or revise them to reflect new events or circumstances.